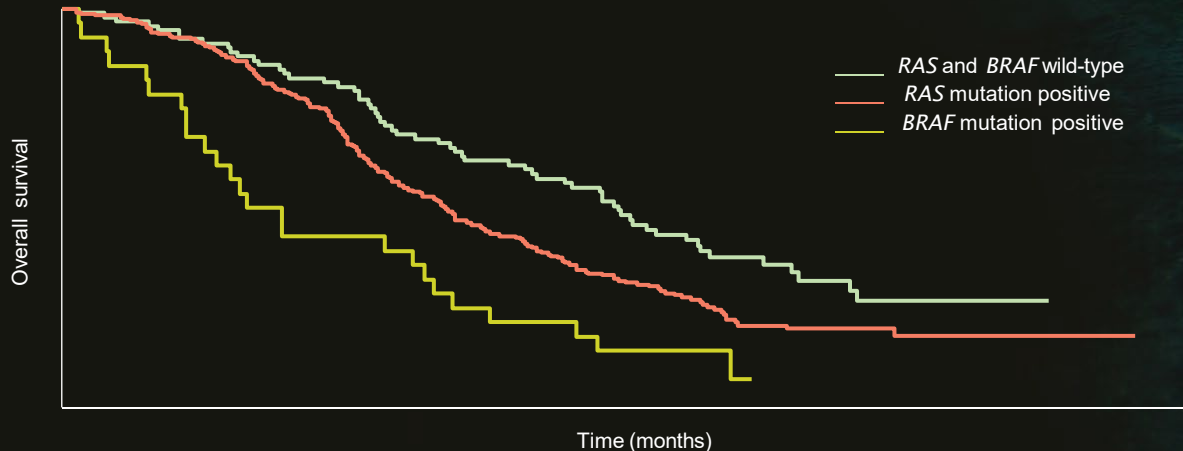


# Patients with mCRC with *RAS*- or *BRAF*-mutated tumours have poorer outcomes than those with wild-type tumours

*RAS*- and, to a greater extent, *BRAF*-mutated tumours are associated with a poorer prognosis than *RAS* and *BRAF* wild-type tumours, based on retrospective analyses of clinical trial data<sup>3-5</sup>

Overall survival according to molecular subgroups in 357 patients with mCRC receiving first-line treatment<sup>3</sup>



Adapted from the TRIBE study: Ref. 3

3. Cremolini C, Loupakis F, Antoniotti C, et al. *Lancet Oncol.* 2015;16(13):1306-1315.

Look for the dangerous drivers in mCRC